



Social Innovation

What's the fuss? Should we foster it?



Navita Dyal
ndyal@glitr.org

"I took the path less travelled"


My Journey



Health
Sciences
(BHSc)




Amazon



Founded 2
start-ups



Medical
Leave



Engineering
(M.Eng)



Founded
GLITR



World Health
Organization

What is Social Innovation?

Pragmatic Approach?

Systemic Approach?

Critical Approach?

Economic Approach?

What is your approach?



Group Think

What is Social Innovation?

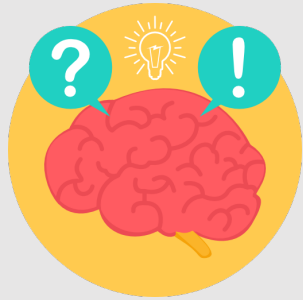


Pragmatic Approach: Innovative activities and services that designed with the goal of meeting a social need. These activities and services are typically developed and diffused through organizations whose primary purposes are social in nature.

[Mulgan et al. (2007) Social Innovation, What It Is, Why It Matters, and How it Can Be Accelerated].

The Pragmatist

What is Social Innovation?

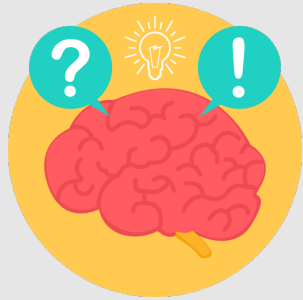


Systemic Approach: A complex process through which new products, processes or programs are introduced; leading to a deep change in daily routines, allocation of resources, power relations and/or values within a system are affected by the innovation.

[Westley (2010) *Making a Difference- Strategies for Scaling Social Innovation for Greater Impact*].

The Excavator

What is Social Innovation?

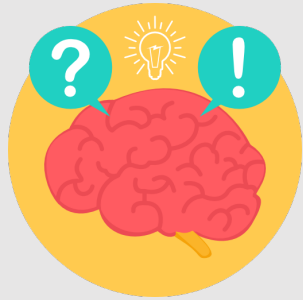


Critical Approach: Empowerment and political mobilization, targeting a bottom-up transformation of the functioning of a social system. The empowerment of stakeholders enables the critical (re)distribution of both material and immaterial resources.

[Moulaert et al. (2009) *Social Innovation and Territorial Development*]

The Criticist

What is Social Innovation?



Economic Approach: A conceptual, process or product change, leading to an organizational change that facilitates changes in financing, and new relationships with stakeholders and territories.

[OECD (2009) *Transforming innovation to address social challenge*]

The Economist

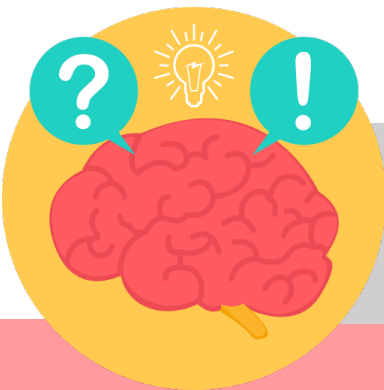
Working Definition

Rooted with an understanding of social issues; developing and deploying solutions that support people and organizations to co-create, learn, and evolve, making our human systems more adaptive and resilient.

“Social innovation is not the prerogative or privilege of any organizational form or legal structure. Solutions often require the active collaboration of constituents across government, business, and the non-profit world.”

—Soule, Malhotra, Clavier

The Intersection of Grassroots Leadership and Social Innovation



What challenges have you faced?

